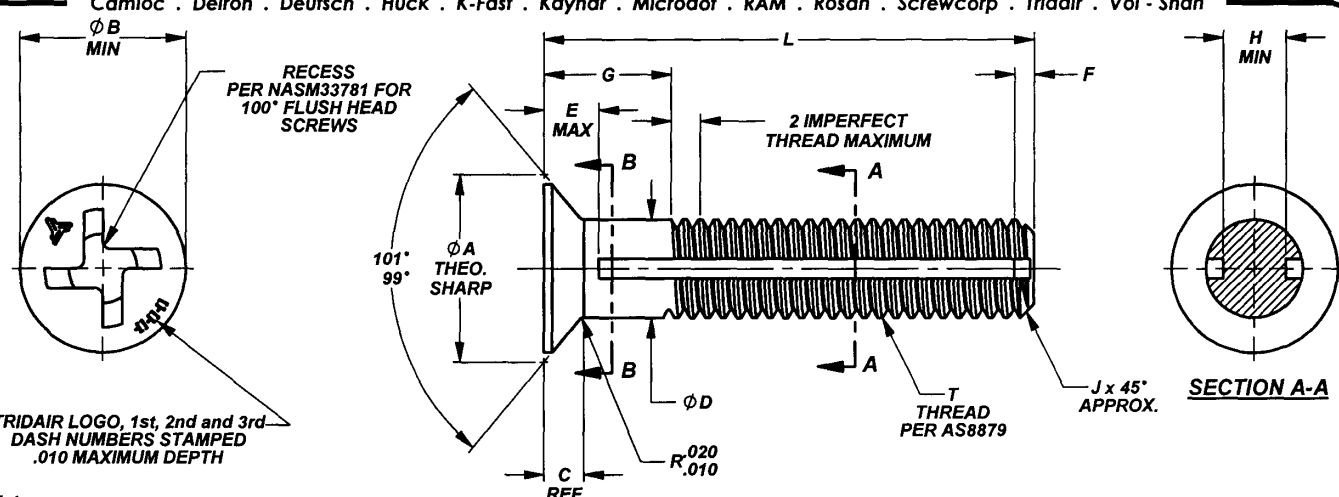


Camloc . Delron . Deutsch . Huck . K-Fast . Kaynar . Microdot . RAM . Rosan . Screwcorp . Tridair . Voi - Shan



MANUFACTURE OF THE PROPRIETARY PARTS SHOWN HERE WITHOUT WRITTEN CONSENT IS ABSOLUTELY PROHIBITED

THIS DRAWING EMBODIES A CONFIDENTIAL, PROPRIETARY DESIGN & ALL DESIGN, MANUFACTURING PRODUCTION, USE & SALE RIGHTS REGARDING SAME ARE EXPRESSLY RESERVED.

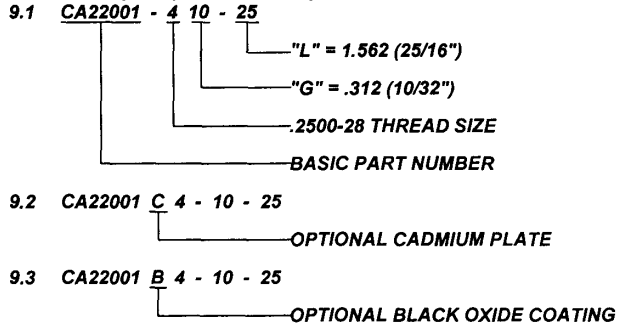
TABLE 1

FIRST DASH SIZE	T THREAD PER AS8879	phi A THEO. SHARP	phi B MIN	C REF	phi D	E MAX	F	J	H MIN	RECOMMENDED SEATING TORQUE, INCH-LBS.	ULTIMATE TENSILE STRENGTH MINIMUM (CALCULATED)	ULTIMATE SINGLE SHEAR STRENGTH MINIMUM ACROSS THRU THREAD (A-A) (CALCULATED)	ULTIMATE SINGLE SHEAR STRENGTH MINIMUM ACROSS THRU SHANK (E-E) (CALCULATED)
-06	.1380-32 UNJC-3A	.279 .267	.231	.057	.1375 .1365	.100	.040	.030	.067	12 TO 18	1,060 LBS.	750 LBS.	970 LBS.
-08	.1640-32 UNJC-3A	.332 .319	.270	.068	.1635 .1625	.100	.040	.030	.086	22 TO 33	1,650 LBS.	990 LBS.	1,400 LBS.
-10	.1900-32 UNJC-3A	.361 .346	.310	.070	.1895 .1885	.100	.040	.030	.108	37 TO 57	2,425 LBS.	1,450 LBS.	1,950 LBS.
-4	.2500-28 UNJF-3A	.480 .472	.427	.095	.2495 .2485	.140	.040	.035	.162	92 TO 140	4,625 LBS.	2,775 LBS.	3,580 LBS.
-5	.3125-24 UNJF-3A	.568 .560	.513	.106	.3120 .3110	.165	.050	.040	.205	185 TO 285	7,400 LBS.	4,425 LBS.	5,650 LBS.
-6	.3750-24 UNJF-3A	.698 .690	.652	.134	.3745 .3745	.195	.050	.050	.268	330 TO 500	11,300 LBS.	7,300 LBS.	8,310 LBS.

NOTES; UNLESS OTHERWISE SPECIFIED:

1. MATERIAL:
 - 1.1 A286 CRES PER AMS5731 OR AMS5737.
2. HEAT TREAT:
 - 2.1 PER AMS5737 AGE ONLY, TO ACHIEVE 160,000 PSI MINIMUM TENSILE.
3. FINISH:
 - 3.1 STANDARD: PASSIVATED PER AMS2700.
 - 3.2 OPTIONAL: CADMIUM PLATED PER AMS-QQ-P-416 TYPE II, CLASS 2 INDICATED BY LETTER "C" IN LIEU OF FIRST DASH. SEE EXAMPLE NOTE 10.
 - 3.3 OPTIONAL: BLACK OXIDE COATING PER MIL-DTL-13924, INDICATED BY LETTER "B" IN LIEU OF FIRST DASH. SEE EXAMPLE NOTE 10.
4. SCREW TO BE USED WITH CA2210-(-) R RETAINING RING TO CAPTIVATE TO PANEL.
5. PANEL PREPARATION PER ALCOA FASTENING SYSTEMS CAL-STD-0260.
6. INSTALLATION PROCEDURE PER ALCOA FASTENING SYSTEMS SALES DRAWING NUMBER CA2210T-(-).
7. MAGNETIC PERMEABILITY IS LESS THAN 2.0 (AIR = 1.0) FOR A FIELD STRENGTH OF H200 OERSTEDS MAGNETIC PERMEABILITY INDICATOR PER MIL-I-17214.
8. LONGER GRIPS (IN 1/32" INCREMENTS) AND LONGER LENGTHS (IN 1/16" INCREMENTS) THAN ARE SHOWN IN TABLES 2 THRU 7 MAY BE ORDERED.

9. PART CALLOUT EXAMPLES:



INTERIM DOCUMENT REVISION		
Rev.	Date	DAF#
D1	10/8/2018	117431

PROJECT NUMBER: 94-052 and 95-038

APPROVED DATE 19 OCT 93 REV. LETTER AND DATE D 2 APR 15 DAF NUMBER DAF 111174	CURRENT DESIGN ACTIVITY: ARCONIC Arconic Fastening Systems TRIDAIR PRODUCTS 300 W. LOMITA BLVD. TORRANCE, CA. 90505	TITLE: SCREW, CAPTIVE, 100° HEAD, CRES, 160 KSI UNLESS OTHERWISE SPECIFIED DIMENSIONS ARE IN INCHES & ASME Y14.6M TOLERANCES: ANGLES DECIMALS = ±.3° .XX = ±.02 .XXX = ±.010	CURRENT DESIGN ACTIVITY: CAGE CODE: 29372 SALES DRAWING NO. CA22001-(-)-(-)-(-) SHEET 1 OF 4
---	---	--	---

S43471

TABLE 2

	G GRIP						L LENGTH	
	.125	.156	.187	.218	.250	.281		.312
.1380-32 SIZE FIRST DASH NUMBERS -06	-4 -7	-5 -7	-6 -7	-7 -7	-8 -7	-----	-----	.437
	-4 -8	-5 -8	-6 -8	-7 -8	-8 -8	-9 -8	-----	.500
	-4 -9	-5 -9	-6 -9	-7 -9	-8 -9	-9 -9	-10 -9	.562
	-4 -10	-5 -10	-6 -10	-7 -10	-8 -10	-9 -10	-10 -10	.625
	-4 -11	-5 -11	-6 -11	-7 -11	-8 -11	-9 -11	-10 -11	.687
	-4 -12	-5 -12	-6 -12	-7 -12	-8 -12	-9 -12	-10 -12	.750
	-4 -13	-5 -13	-6 -13	-7 -13	-8 -13	-9 -13	-10 -13	.812
	-4 -14	-5 -14	-6 -14	-7 -14	-8 -14	-9 -14	-10 -14	.875
	-4 -15	-5 -15	-6 -15	-7 -15	-8 -15	-9 -15	-10 -15	.937
	-4 -16	-5 -16	-6 -16	-7 -16	-8 -16	-9 -16	-10 -16	1.000
	-4 -17	-5 -17	-6 -17	-7 -17	-8 -17	-9 -17	-10 -17	1.062
	-4 -18	-5 -18	-6 -18	-7 -18	-8 -18	-9 -18	-10 -18	1.125
	-4 -19	-5 -19	-6 -19	-7 -19	-8 -19	-9 -19	-10 -19	1.187
	-4 -20	-5 -20	-6 -20	-7 -20	-8 -20	-9 -20	-10 -20	1.250
	-4 -21	-5 -21	-6 -21	-7 -21	-8 -21	-9 -21	-10 -21	1.312
	-4 -22	-5 -22	-6 -22	-7 -22	-8 -22	-9 -22	-10 -22	1.375
	-4 -23	-5 -23	-6 -23	-7 -23	-8 -23	-9 -23	-10 -23	1.437
	-4 -24	-5 -24	-6 -24	-7 -24	-8 -24	-9 -24	-10 -24	1.500
	-4 -25	-5 -25	-6 -25	-7 -25	-8 -25	-9 -25	-10 -25	1.562
	-4 -26	-5 -26	-6 -26	-7 -26	-8 -26	-9 -26	-10 -26	1.625
	-4 -27	-5 -27	-6 -27	-7 -27	-8 -27	-9 -27	-10 -27	1.687
	-4 -28	-5 -28	-6 -28	-7 -28	-8 -28	-9 -28	-10 -28	1.750


TABLE 3

	G GRIP						L LENGTH	
	.125	.156	.187	.218	.250	.281		.312
.1640-32 SIZE FIRST DASH NUMBERS -08	-4 -8	-5 -8	-6 -8	-7 -8	-8 -8	-----	-----	.500
	-4 -9	-5 -9	-6 -9	-7 -9	-8 -9	-9 -9	-----	.562
	-4 -10	-5 -10	-6 -10	-7 -10	-8 -10	-9 -10	-10 -10	.625
	-4 -11	-5 -11	-6 -11	-7 -11	-8 -11	-9 -11	-10 -11	.687
	-4 -12	-5 -12	-6 -12	-7 -12	-8 -12	-9 -12	-10 -12	.750
	-4 -13	-5 -13	-6 -13	-7 -13	-8 -13	-9 -13	-10 -13	.812
	-4 -14	-5 -14	-6 -14	-7 -14	-8 -14	-9 -14	-10 -14	.875
	-4 -15	-5 -15	-6 -15	-7 -15	-8 -15	-9 -15	-10 -15	.937
	-4 -16	-5 -16	-6 -16	-7 -16	-8 -16	-9 -16	-10 -16	1.000
	-4 -17	-5 -17	-6 -17	-7 -17	-8 -17	-9 -17	-10 -17	1.062
	-4 -18	-5 -18	-6 -18	-7 -18	-8 -18	-9 -18	-10 -18	1.125
	-4 -19	-5 -19	-6 -19	-7 -19	-8 -19	-9 -19	-10 -19	1.187
	-4 -20	-5 -20	-6 -20	-7 -20	-8 -20	-9 -20	-10 -20	1.250
	-4 -21	-5 -21	-6 -21	-7 -21	-8 -21	-9 -21	-10 -21	1.312
	-4 -22	-5 -22	-6 -22	-7 -22	-8 -22	-9 -22	-10 -22	1.375
	-4 -23	-5 -23	-6 -23	-7 -23	-8 -23	-9 -23	-10 -23	1.437
	-4 -24	-5 -24	-6 -24	-7 -24	-8 -24	-9 -24	-10 -24	1.500
	-4 -25	-5 -25	-6 -25	-7 -25	-8 -25	-9 -25	-10 -25	1.562
	-4 -26	-5 -26	-6 -26	-7 -26	-8 -26	-9 -26	-10 -26	1.625
	-4 -27	-5 -27	-6 -27	-7 -27	-8 -27	-9 -27	-10 -27	1.687
	-4 -28	-5 -28	-6 -28	-7 -28	-8 -28	-9 -28	-10 -28	1.750

MANUFACTURE OF THE PROPRIETARY PARTS SHOWN HERE WITHOUT WRITTEN CONSENT IS ABSOLUTELY PROHIBITED

THIS DRAWING EMBODIES A CONFIDENTIAL, PROPRIETARY DESIGN & ALL DESIGN, MANUFACTURING PRODUCTION, USE & SALE RIGHTS REGARDING SAME ARE EXPRESSLY RESERVED.

INTERIM DOCUMENT REVISION		
Rev.	Date	DAF#
D1	10/8/2018	117431

S43471	APPROVED DATE 19 OCT 93	 ARCONIC Arconic Fastening Systems TRIDAIR PRODUCTS 300 W. LOMITA BLVD. TORRANCE, CA. 90505	TITLE: SCREW, CAPTIVE, 100° HEAD, CRES, 160 KSI	CURRENT DESIGN ACTIVITY: CAGE CODE: 29372
	REV. LETTER AND DATE D 2-APR-15		SALES DRAWING NO.	
	DAF NUMBER DAF 111174		UNLESS OTHERWISE SPECIFIED DIMENSIONS ARE IN INCHES & ASME Y14.5M TOLERANCES: ANGLES = ±.3° DECIMALS .XX = ±.02 .XXX = ±.010	CA22001-()-()-() SHEET 2 OF 4

MANUFACTURE OF THE PROPRIETARY PARTS SHOWN HERE WITHOUT WRITTEN CONSENT IS ABSOLUTELY PROHIBITED

THIS DRAWING EMBODIES A CONFIDENTIAL, PROPRIETARY DESIGN & ALL DESIGN, MANUFACTURING PRODUCTION, USE & SALE RIGHTS REGARDING SAME ARE EXPRESSLY RESERVED.


TABLE 4

	G GRIP						L LENGTH	
	.125	.156	.187	.218	.250	.281		.312
.1900-32 SIZE FIRST DASH NUMBERS -10	-4-7	-5-7	-6-7	-7-7	-8-7	-----	-----	.437
	-4-8	-5-8	-6-8	-7-8	-8-8	-9-8	-----	.500
	-4-9	-5-9	-6-9	-7-9	-8-9	-9-9	-10-9	.562
	-4-10	-5-10	-6-10	-7-10	-8-10	-9-10	-10-10	.625
	-4-11	-5-11	-6-11	-7-11	-8-11	-9-11	-10-11	.687
	-4-12	-5-12	-6-12	-7-12	-8-12	-9-12	-10-12	.750
	-4-13	-5-13	-6-13	-7-13	-8-13	-9-13	-10-13	.812
	-4-14	-5-14	-6-14	-7-14	-8-14	-9-14	-10-14	.875
	-4-15	-5-15	-6-15	-7-15	-8-15	-9-15	-10-15	.937
	-4-16	-5-16	-6-16	-7-16	-8-16	-9-16	-10-16	1.000
	-4-17	-5-17	-6-17	-7-17	-8-17	-9-17	-10-17	1.062
	-4-18	-5-18	-6-18	-7-18	-8-18	-9-18	-10-18	1.125
	-4-19	-5-19	-6-19	-7-19	-8-19	-9-19	-10-19	1.187
	-4-20	-5-20	-6-20	-7-20	-8-20	-9-20	-10-20	1.250
	-4-21	-5-21	-6-21	-7-21	-8-21	-9-21	-10-21	1.312
	-4-22	-5-22	-6-22	-7-22	-8-22	-9-22	-10-22	1.375
	-4-23	-5-23	-6-23	-7-23	-8-23	-9-23	-10-23	1.437
	-4-24	-5-24	-6-24	-7-24	-8-24	-9-24	-10-24	1.500
	-4-25	-5-25	-6-25	-7-25	-8-25	-9-25	-10-25	1.562
	-4-26	-5-26	-6-26	-7-26	-8-26	-9-26	-10-26	1.625
	-4-27	-5-27	-6-27	-7-27	-8-27	-9-27	-10-27	1.687
	-4-28	-5-28	-6-28	-7-28	-8-28	-9-28	-10-28	1.750

TABLE 5

	G GRIP						L LENGTH
	.156	.187	.218	.250	.281	.312	
.2500-28 SIZE FIRST DASH NUMBERS -4	-5-7	-6-7	-7-7	-8-7	-----	-----	.437
	-5-8	-6-8	-7-8	-8-8	-9-8	-----	.500
	-5-9	-6-9	-7-9	-8-9	-9-9	-10-9	.562
	-5-10	-6-10	-7-10	-8-10	-9-10	-10-10	.625
	-5-11	-6-11	-7-11	-8-11	-9-11	-10-11	.687
	-5-12	-6-12	-7-12	-8-12	-9-12	-10-12	.750
	-5-13	-6-13	-7-13	-8-13	-9-13	-10-13	.812
	-5-14	-6-14	-7-14	-8-14	-9-14	-10-14	.875
	-5-15	-6-15	-7-15	-8-15	-9-15	-10-15	.937
	-5-16	-6-16	-7-16	-8-16	-9-16	-10-16	1.000
	-5-17	-6-17	-7-17	-8-17	-9-17	-10-17	1.062
	-5-18	-6-18	-7-18	-8-18	-9-18	-10-18	1.125
	-5-19	-6-19	-7-19	-8-19	-9-19	-10-19	1.187
	-5-20	-6-20	-7-20	-8-20	-9-20	-10-20	1.250
	-5-21	-6-21	-7-21	-8-21	-9-21	-10-21	1.312
	-5-22	-6-22	-7-22	-8-22	-9-22	-10-22	1.375
	-5-23	-6-23	-7-23	-8-23	-9-23	-10-23	1.437
	-5-24	-6-24	-7-24	-8-24	-9-24	-10-24	1.500
	-5-25	-6-25	-7-25	-8-25	-9-25	-10-25	1.562
	-5-26	-6-26	-7-26	-8-26	-9-26	-10-26	1.625
	-5-27	-6-27	-7-27	-8-27	-9-27	-10-27	1.687
	-5-28	-6-28	-7-28	-8-28	-9-28	-10-28	1.750

INTERIM DOCUMENT REVISION	
Rev.	DAF#
D1	117431
Date	
10/8/2018	

APPROVED DATE 19 OCT 93	CURRENT DESIGN ACTIVITY:  ARCONIC Arconic Fastening Systems	TITLE: SCREW, CAPTIVE, 100° HEAD, CRES, 160 KSI	CURRENT DESIGN ACTIVITY: CAGE CODE: 29372
REV. LETTER AND DATE D 2 APR 13	TRIDAIR PRODUCTS 300 W. LOMITA BLVD. TORRANCE, CA. 90505	UNLESS OTHERWISE SPECIFIED DIMENSIONS ARE IN INCHES & ASME Y14.5M TOLERANCES:	SALES DRAWING NO.
DAF NUMBER DAF 444474		ANGLES = ±3° DECIMALS JY = ±.02 XXX = ±.010	CA22001-()-()-()
S43471			SHEET 3 OF 4

MANUFACTURE OF THE PROPRIETARY PARTS SHOWN HERE WITHOUT WRITTEN CONSENT IS ABSOLUTELY PROHIBITED
 THIS DRAWING EMBODIES A CONFIDENTIAL, PROPRIETARY DESIGN & ALL DESIGN, MANUFACTURING PRODUCTION, USE & SALE RIGHTS REGARDING SAME ARE EXPRESSLY RESERVED.

TABLE 6

	G GRIP					L LENGTH
	.187	.218	.250	.281	.312	
.3125-24 SIZE FIRST DASH NUMBERS-5	-6-7	-7-7	-----	-----	-----	.437
	-6-8	-7-8	-8-8	-9-8	-----	.500
	-6-9	-7-9	-8-9	-9-9	-10-9	.562
	-6-10	-7-10	-8-10	-9-10	-10-10	.625
	-6-11	-7-11	-8-11	-9-11	-10-11	.687
	-6-12	-7-12	-8-12	-9-12	-10-12	.750
	-6-13	-7-13	-8-13	-9-13	-10-13	.812
	-6-14	-7-14	-8-14	-9-14	-10-14	.875
	-6-15	-7-15	-8-15	-9-15	-10-15	.937
	-6-16	-7-16	-8-16	-9-16	-10-16	1.000
	-6-17	-7-17	-8-17	-9-17	-10-17	1.062
	-6-18	-7-18	-8-18	-9-18	-10-18	1.125
	-6-19	-7-19	-8-19	-9-19	-10-19	1.187
	-6-20	-7-20	-8-20	-9-20	-10-20	1.250
	-6-21	-7-21	-8-21	-9-21	-10-21	1.312
	-6-22	-7-22	-8-22	-9-22	-10-22	1.375
	-6-23	-7-23	-8-23	-9-23	-10-23	1.437
	-6-24	-7-24	-8-24	-9-24	-10-24	1.500
	-6-25	-7-25	-8-25	-9-25	-10-25	1.562
	-6-26	-7-26	-8-26	-9-26	-10-26	1.625
	-6-27	-7-27	-8-27	-9-27	-10-27	1.687
	-6-28	-7-28	-8-28	-9-28	-10-28	1.750

TABLE 7

	G GRIP				L LENGTH
	.218	.250	.281	.312	
.3750-24 SIZE FIRST DASH NUMBERS-6	-7-7	-----	-----	-----	.437
	-7-8	-8-8	-9-8	-----	.500
	-7-9	-8-9	-9-9	-10-9	.562
	-7-10	-8-10	-9-10	-10-10	.625
	-7-11	-8-11	-9-11	-10-11	.687
	-7-12	-8-12	-9-12	-10-12	.750
	-7-13	-8-13	-9-13	-10-13	.812
	-7-14	-8-14	-9-14	-10-14	.875
	-7-15	-8-15	-9-15	-10-15	.937
	-7-16	-8-16	-9-16	-10-16	1.000
	-7-17	-8-17	-9-17	-10-17	1.062
	-7-18	-8-18	-9-18	-10-18	1.125
	-7-19	-8-19	-9-19	-10-19	1.187
	-7-20	-8-20	-9-20	-10-20	1.250
	-7-21	-8-21	-9-21	-10-21	1.312
	-7-22	-8-22	-9-22	-10-22	1.375
	-7-23	-8-23	-9-23	-10-23	1.437
	-7-24	-8-24	-9-24	-10-24	1.500
	-7-25	-8-25	-9-25	-10-25	1.562
	-7-26	-8-26	-9-26	-10-26	1.625
	-7-27	-8-27	-9-27	-10-27	1.687
	-7-28	-8-28	-9-28	-10-28	1.750

INTERIM DOCUMENT REVISION		
Rev.	Date	DAF#
D1	10/8/2018	117431

APPROVED DATE 19 OCT 93
REV. LETTER AND DATE D 2 APR 15
DAF NUMBER DAF 411174

CURRENT DESIGN ACTIVITY:



ARCONIC
 Arconic Fastening Systems
TRIDAIR PRODUCTS
 300 W. LOMITA BLVD.
 TORRANCE, CA. 90505

TITLE:
**SCREW, CAPTIVE, 100° HEAD,
 CRES, 160 KSI**

UNLESS OTHERWISE SPECIFIED
 DIMENSIONS ARE IN INCHES &
 ASME Y14.5M TOLERANCES:

ANGLES = ±3°
 DECIMALS .XX = ±.02
 .XXX = ±.010

CURRENT DESIGN ACTIVITY:
 CAGE CODE: 29372
 SALES DRAWING NO.
CA22001-()-()-()
 SHEET 4 OF 4

S43471